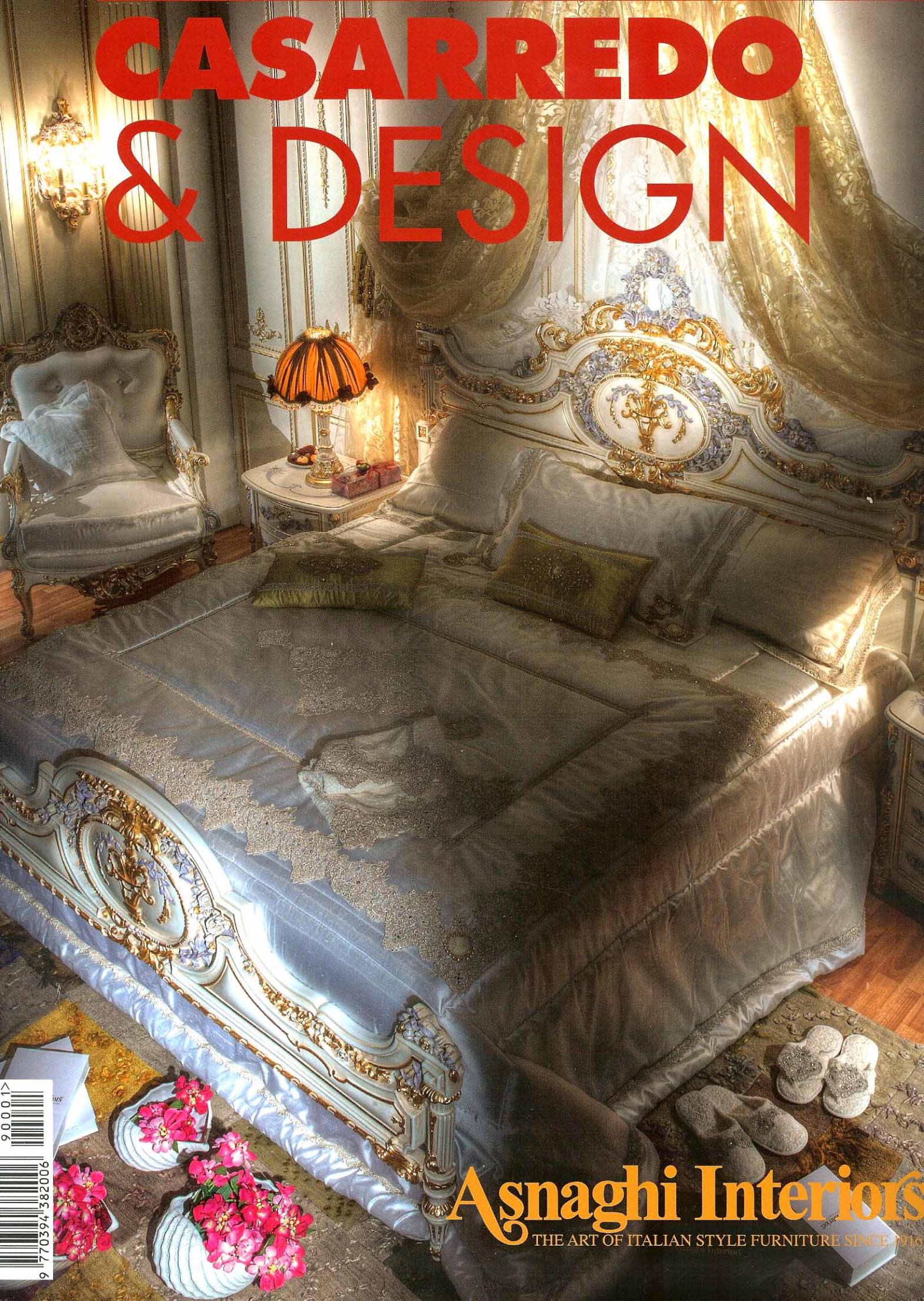


CASARREDO & DESIGN



900017
9 770394 382006

Asnaghi Interiors
THE ART OF ITALIAN STYLE FURNITURE SINCE 1916

TIMELESS CLASSICISM IN A MILAN PENTHOUSE

This project, for a spectacular penthouse in the centre of Milan, was created to provide the client with a space that is timeless, yet perfect for different times and moments



This is the underlying theme of a meticulous work carried out with the full cooperation of a cultured, educated client, who agreed to a combination of high-value objets d'art with

versatile environments that magically transform from single to divided spaces as needed, simply by moving sliding inlaid boiserie that convert from static backdrops into

functional decor. In the main reception room, for example, sliding boiserie separate the area from other rooms to create a more private space. Everything in the reception

room helps create an atmosphere of great comfort: from classic sofas to lamps recovered from an early twentieth century cruise liner, paintings and rugs.

> The main reception room of the apartment. A valuable rug can be seen on the floor, and on the walls are some famous paintings including the Indian ink on silk "Le Pantere", which came from the palace of a Chinese emperor. In the background is a sliding boiserie, which can be opened and closed as needed.

> A corner of the main reception room furnished with a small table in parchment designed and made by Arbus, and chairs by Giò Ponti. The painting in the panel behind the table is by the Andalusian painter Pepe Morales, painted with Mexican vegetable colours.



Even in the dining hall, one breathes an air of luxury and culture: it seeps from the selected furnishings, which are all by well-known designers. In this room, the architect used a clever trick to hide unsightly pipes from view: two sound-proof cylinders, 60 cm diameter in gold and silver leaf, that fit perfectly with the rest of the room.

The panels in the dining room are in oil-painted wood, none other than sketches for the preparation of ceramics.

In the kitchen and bathrooms, everything is modern and functional, with a classic provided in the form of early twentieth century paintings in the kitchen and, in the bathrooms, crystal lamps and art deco details.

The modern feel in these rooms comes from - as well as the high technology of appliances in the kitchen and a modern shower in steel and glass in the main bathroom - the use of unusual materials like steel, copper and wengè; copper was also used for the desk in the study.

The sliding boiserie, an element that recurs throughout the apartment, also appears in the functional space between kitchen, reception room and study.

This area can be isolated simply by closing the boiserie to create a television area or

> Another view of the large reception room. The crystal lamp came from an early twentieth century cruise liner, the armchair in orange leather, in the foreground, is by Rudman Design..

> Contrary to the classic style of the entire apartment, the kitchen, furnished entirely in steel, copper and wengè, is extremely modern and functional.

> In the foreground is a striped table in copper and steel, surrounded by Giò Ponti chairs. A in this room are paintings from the early twentieth century by Gabbiani and Chini, in clear contrast with the modern style of the rest of the room.

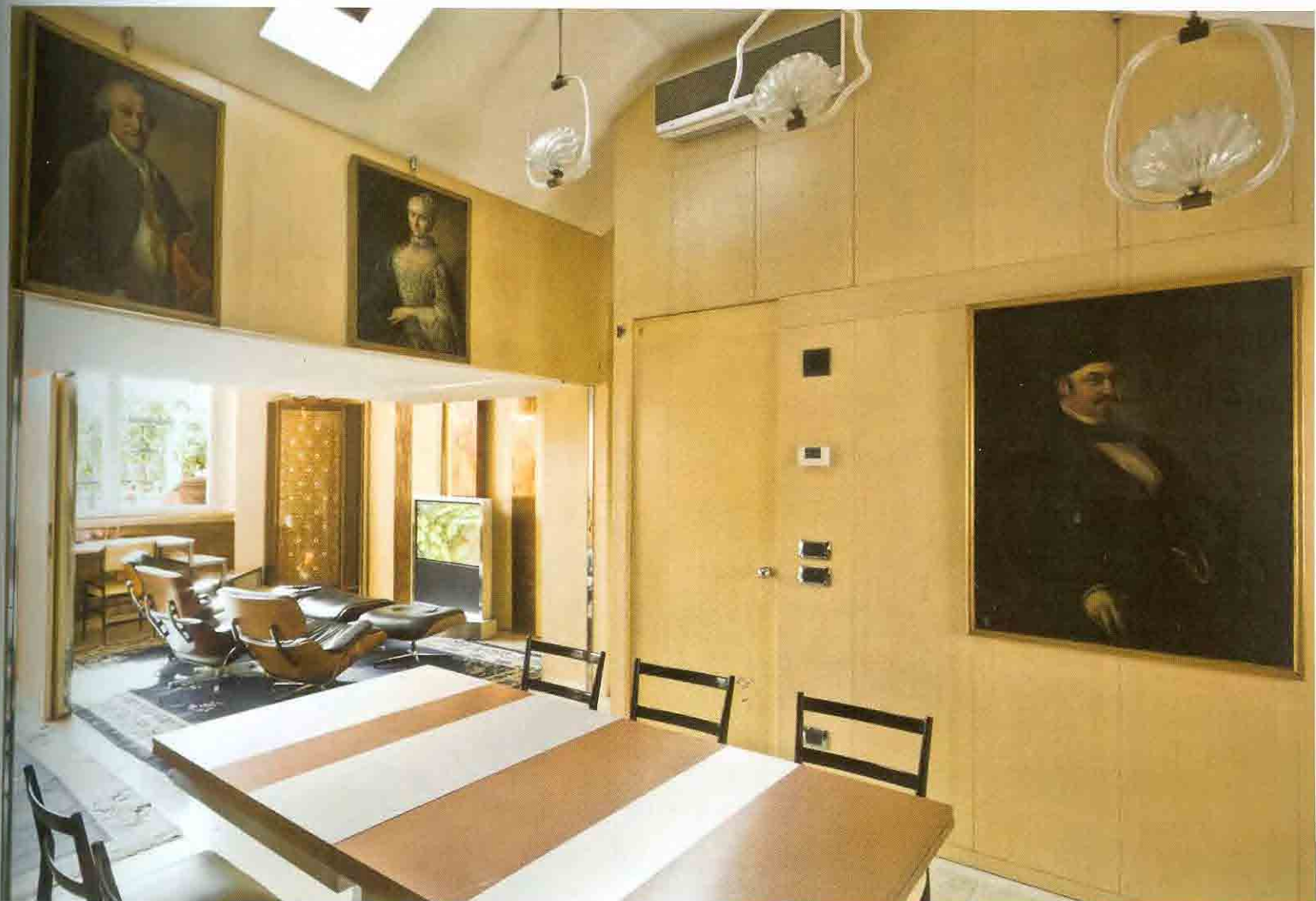
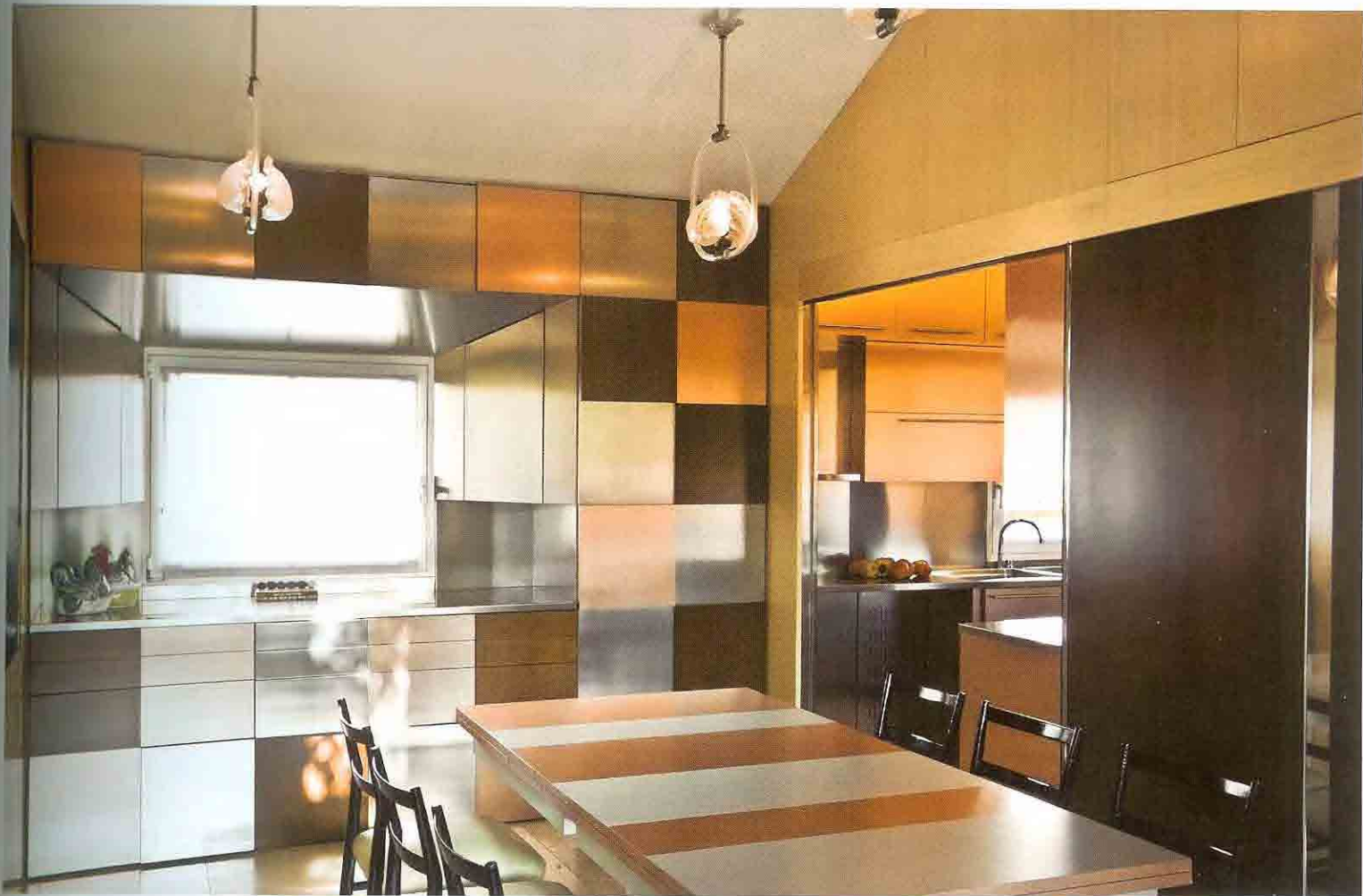


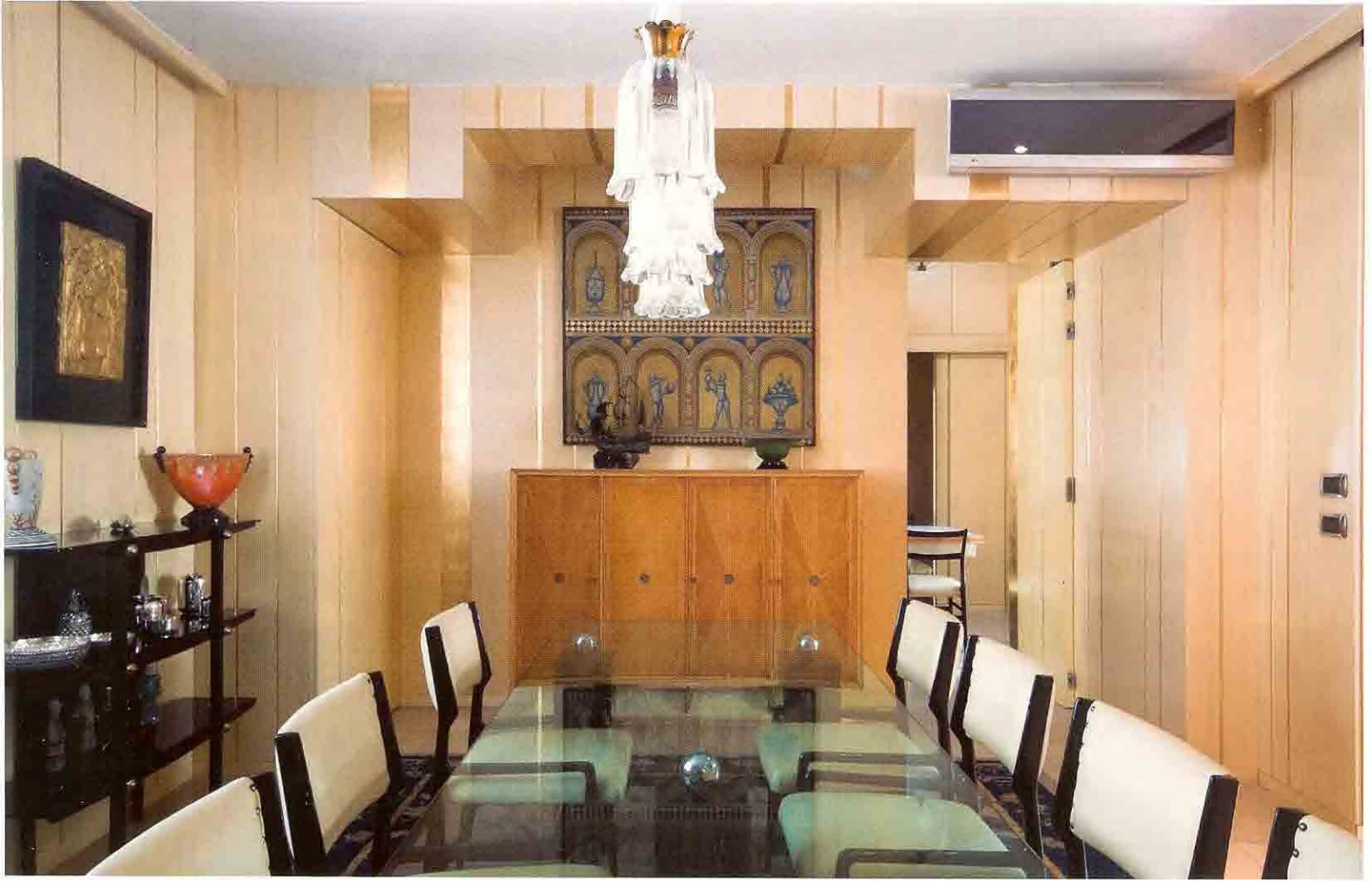
can, with the boiserie open, become an extension of the other three rooms: an open space where everyone in the living areas of the apartment

is connected regardless of their activity. Modernity and technology recur in the corridor leading from the entrance to the

bedrooms, where the architect designed a curved stone wall with vertical strips in copper and steel to hide the stairwell.

In the master bedroom is Bugatti bed dating back to the Deco era; the headboard is ivory, bronze and wood, materials that enrich it and endo

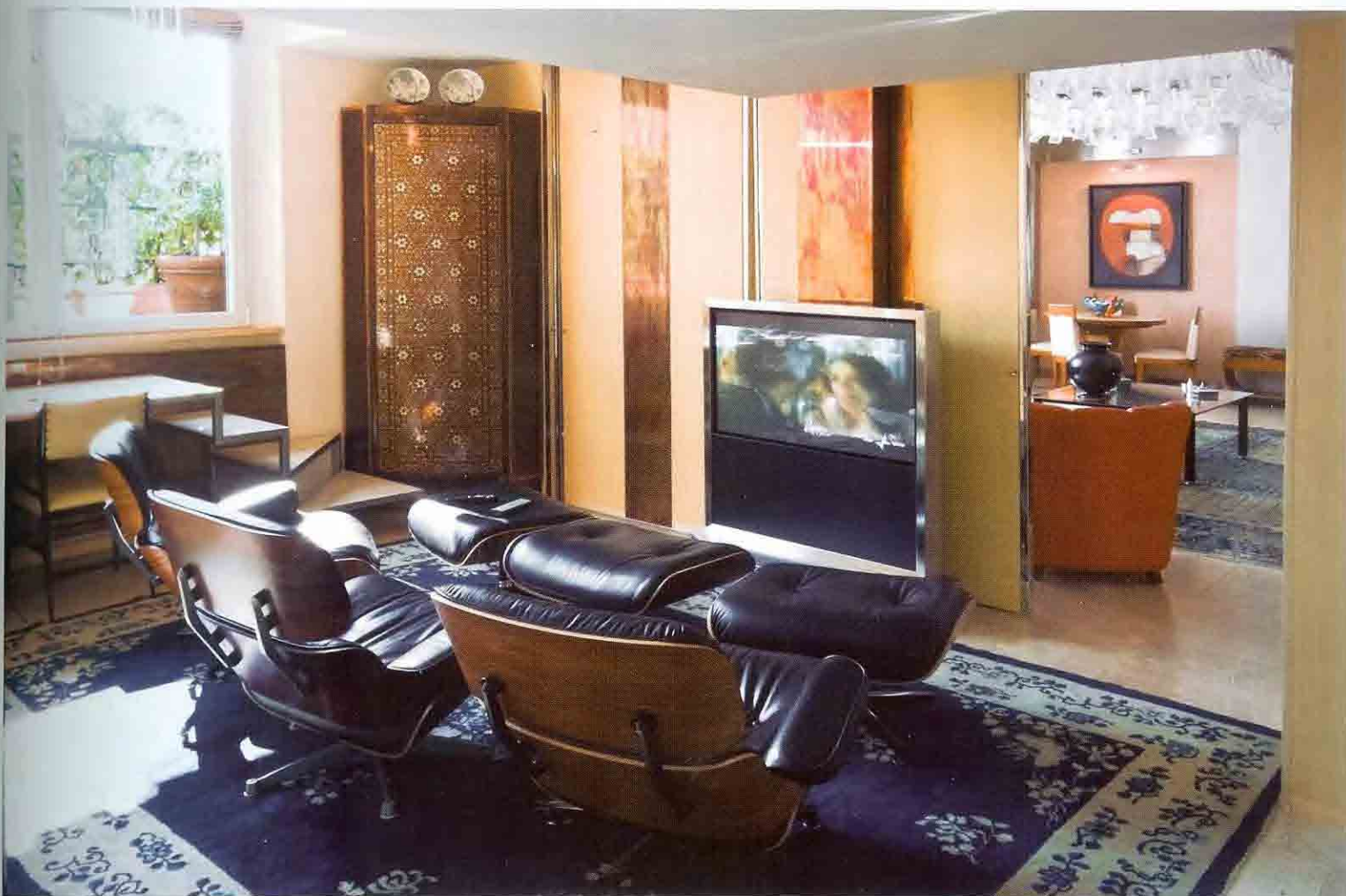




> Dining room with crystal table by Introini. Once again the chairs, in wood and leather, are by Giò Ponti. In the background is an inlaid piece of furniture in whitened oak, embellished with bronze details, designed by Arbus, surmounted by wood panelling with oil designs.

> Reverse shot of the dining hall. On the left wall is the glass work "Struzzi Ballerini" by Barovier; on the right are the soundproofed cylinders in gold and silver leaf hiding the pipes. In the background wood panelling with oil designs can be seen.

> A functional space between the reception room, kitchen and study: by opening or closing the boiserie as needed, it is an extension of the three rooms or can be closed off for peace and privacy.



it with great charm. Architecture has always sought to mould space to facilitate daily activities and, now more than ever, in this era of wellbeing and multimedia where we have subverted the concepts of vicinity and distance, demolished space/time limits and are so technologically evolved that the useful is confused with the superfluous, there is a need to rediscover the root of

> The study is furnished with a leopard print sofa and a desk, the top and drawers of which are made entirely of copper.

> The corridor leading to the bedrooms. On the right, a curved part in stone with vertical bars in steel and copper hides the condominium stairwell. In the background you can just see the entrance, totally covered in mirrors.

> The service bathroom is furnished in copper (a recurring material, used often throughout the rooms in the apartment). The washbasin is in Roman travertine, as is the floor and side of the bath. On each side of the mirror are two lamps with stand and copper bases. The crystal lampshade is from the Galleria di luci e vetri d'epoca di Neri of Parma.

> The master bedroom with Bugatti bed and Deco style headboard in ivory, wood and bronze. In the largest circle of the headboard is a mirror, in which the wardrobe can be seen reflected. The lamps are from the Galleria di luci e vetri d'epoca di Neri di Parma.



responses to our most natural needs. Now, more than ever, we must customise our living space, which has reclaimed its role as a protective casing,

to our own measurements so it can become an organism that actively participates in our daily lives.

In the relationship between

architecture and health, it is a basic desire, to dream of one's own home and image in a way that reflects us and represents us.

The dream of an attractive, secure, intelligent and functional home has always been architecture's centre of interest, the desire of those who



wish to live in harmony with themselves and around them. In this case, the attentive, educated participation of the client during all phases of the project meant this dream could be fully realised and exalted, combining architecture with a great passion for objects d'art, including a work by Pepe Morales, painter of renowned international fame, represented at the "El Catalejo" art gallery in Marbella,

> The master bathroom. The wall above the washbasins on the left is mirrored from top to bottom. The glass and steel shower can be seen in its reflection. Wall tiles are Roman travertine. Lighting is from spotlights set in the mirrored wall.

the splendid Indian ink on silk "Le Pantere" originating from a Chinese emperor's palace, various early twentieth century works by Gabbiani and Chini, the marvellous "Struzzi Ballerine" work in glass by Barovier, which come from, as do all the lamps and lights in this home, from the Galleria di luci e vetri d'epoca di Neri of Parma. Completing the collection of Deco furnishings are pieces by Arbus and chairs by Giò Ponti, selected with great care and skill by Robertaebasta of Milan.

"These are objects that make me feel good" says the client. "They make me think positively and give me energy". ■